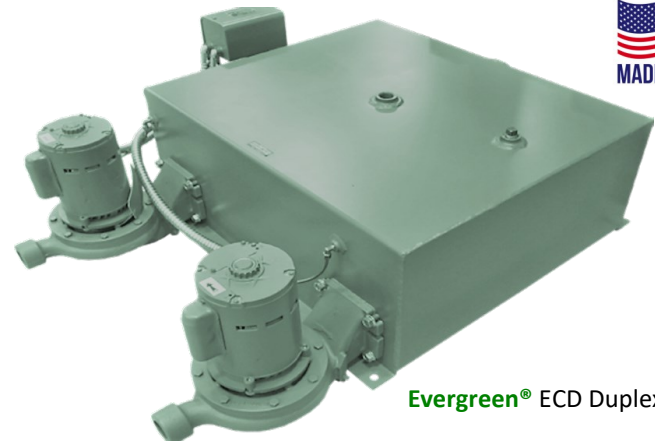


Features

- Simplex and Duplex Pump Packages
- Carbon-Steel Tanks or Optional Stainless Steel
- High Efficiency 3450 RPM Motors
- Bronze Impeller, Peak Efficiency Pumps
- Cast Iron Bodies
- Heavy Duty Float Switches and Operating Controls
- Capacities 10,000—50,000 EDR
- Discharge Pressures 20—80 PSIG
- Standard Receiver Sizes: 10-15-30-45-75-95 gallons.



Evergreen® ECD Duplex

Condensate Return Recovery Systems

Evergreen® Series Condensate Return Pumps are designed to provide an efficient means of condensate recovery for steam heating systems and steam process applications. A float actuated switch turns the pump on and off based on the water level in the tank. Evergreen Condensate Pumps are available in simplex and duplex packages.

Boiler Feed Recover Systems

Evergreen® Series Boiler Feed Pumps are designed to maintain boiler water level and provide make-up water from an outside source. A boiler water line control turns the pump on and off when the boiler requires it. Water level in the receiver tank is maintained by using a water make-up valve activated by a reverse acting float switch. If the water in the receiver is inadequate, additional boiler feed water is automatically added to the receiver tank. Some typical applications include gravity return comfort heating system, low pressure boilers or low pressure process equipment.

Low Operating Costs

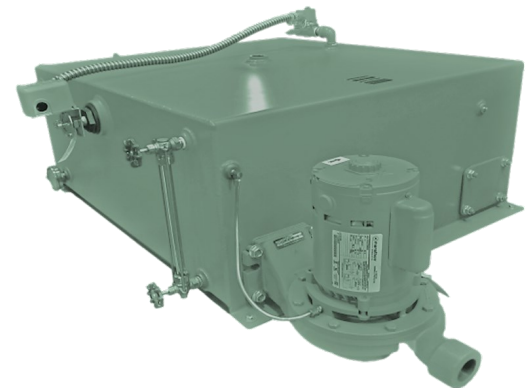
Evergreen® Series designed with high efficiency 3450 RPM motors and peak efficiency pumps which yield lower energy costs. Our pumps have long life, high temperature ceramic seals (250°) eliminating the stuffing box designed leakage of valuable condensate. The motors are mounted off the floor in a lower maintenance environment.

Overload Protection

Evergreen® Series Control Panel comes with high quality electrical controls which provide peak overload protection, featuring across the line magnetic starters and circuit breakers and are accurately tuned to the specific loading needs of the motors. Units with 2HP and larger motors require an electrical control panel. Smaller HP motors can be ordered with a control panel providing the same protection afforded the larger motors.

Oversized Rated Duty

Evergreen® Series units are designed for low NPSH® giving them the ability to handle high temperature condensate quietly and efficiently at a much higher than specified EDR. This assures low maintenance and long life. Duplex models provide 100% stand-by with alternation.



Evergreen® ECS Simplex Unit

EVERGREEN® Condensate Pumps

| Capacity Sq. Ft. EDR | Pump G.P.M. | Discharge PSI | Motor H.P. | Receiver Gallons | Inlet NPT | Outlet NPT | Model No. | | Shipping Weight Lbs. | |
|-------------------------|----------------|------------------|---------------|---------------------|--------------|---------------|---------------|---------------|----------------------|--------|
| | | | | | | | Simplex | Duplex | Simplex | Duplex |
| 2,000 | 3 | 10 | 1/3 | 10 | 2" | 1-1/4" | ECS2110-003X | N/A | 95 | N/A |
| 2,000 | 3 | 20 | 1/3 | 10 | 2" | 1-1/4" | ECS2210-003X | N/A | 95 | N/A |
| 2,000 | 3 | 30 | 1/2 | 10 | 2" | 1-1/4" | ECS2310-005X | N/A | 100 | N/A |
| 2,000 | 3 | 40 | 1 | 10 | 2" | 1-1/4" | ECS2410-010X | N/A | 107 | N/A |
| 2,000 | 3 | 50 | 1-1/2 | 10 | 2" | 1-1/4" | ECS2510-015X | N/A | 109 | N/A |
| 4,000 | 6 | 10 | 1/3 | 10 | 2" | 1-1/4" | ECS4110-003X | N/A | 95 | N/A |
| 4,000 | 6 | 20 | 1/3 | 10 | 2" | 1-1/4" | ECS4210-003X | N/A | 95 | N/A |
| 4,000 | 6 | 30 | 1/2 | 10 | 2" | 1-1/4" | ECS4310-005X | N/A | 100 | N/A |
| 4,000 | 6 | 40 | 1 | 10 | 2" | 1-1/4" | ECS4410-010X | N/A | 107 | N/A |
| 4,000 | 6 | 50 | 1-1/2 | 10 | 2" | 1-1/4" | ECS4510-015X | N/A | 109 | N/A |
| 6,000 | 9 | 10 | 1/3 | 10 | 2" | 1-1/4" | ECS6110-003X | N/A | 95 | N/A |
| 6,000 | 9 | 20 | 1/3 | 10 | 2" | 1-1/4" | ECS6210-003X | N/A | 95 | N/A |
| 6,000 | 9 | 30 | 3/4 | 10 | 2" | 1-1/4" | ECS6310-007X | N/A | 103 | N/A |
| 6,000 | 9 | 40 | 1 | 10 | 2" | 1-1/4" | ECS6410-010X | N/A | 107 | N/A |
| 6,000 | 9 | 50 | 1-1/2 | 10 | 2" | 1-1/4" | ECS6510-015X | N/A | 109 | N/A |
| 8,000 | 12 | 10 | 1/3 | 10 | 2" | 1-1/4" | ECS8110-003X | N/A | 95 | N/A |
| 8,000 | 12 | 20 | 1/2 | 10 | 2" | 1-1/4" | ECS8210-005X | N/A | 95 | N/A |
| 8,000 | 12 | 30 | 3/4 | 10 | 2" | 1-1/4" | ECS8310-007X | N/A | 103 | N/A |
| 8,000 | 12 | 40 | 1 | 10 | 2" | 1-1/4" | ECS8410-010X | N/A | 107 | N/A |
| 8,000 | 12 | 50 | 1-1/2 | 10 | 2" | 1-1/4" | ECS8510-015X | N/A | 109 | N/A |
| 8,000 | 12 | 60 | 2 | 10 | 2" | 1-1/4" | ECS8610-020X | N/A | 113 | N/A |
| 10,000 | 15 | 20 | 1/2 | 15 | 2-1/2" | 1-1/4" | ECS10215-005X | ECD10215-005X | 135 | 185 |
| 10,000 | 15 | 30 | 1/2 | 15 | 2-1/2" | 1-1/4" | ECS10315-005X | ECD10315-005X | 140 | 190 |
| 10,000 | 15 | 40 | 3/4 | 15 | 2-1/2" | 1-1/4" | ECS10415-007X | ECD10415-007X | 143 | 193 |
| 10,000 | 15 | 50 | 1-1/2 | 15 | 2-1/2" | 1-1/4" | ECS10515-015X | ECD10515-015X | 150 | 200 |
| 10,000 | 15 | 60 | 2 | 15 | 2-1/2" | 1-1/4" | ECS10615-020X | ECD10615-020X | 155 | 205 |
| 10,000 | 15 | 70 | 3 | 15 | 2-1/2" | 1-1/4" | ECS10715-030X | ECD10715-030X | 163 | 210 |
| 10,000 | 15 | 80 | 3 | 15 | 2 1/2" | 1-1/4" | ECS10815-030X | ECD10815-030X | 163 | 210 |
| 15,000 | 22.5 | 20 | 3/4 | 30 | 2-1/2" | 1-1/4" | ECS15230-007X | ECD15230-007X | 185 | 231 |
| 15,000 | 22.5 | 30 | 3/4 | 30 | 2-1/2" | 1-1/4" | ECS15330-007X | ECD15330-007X | 194 | 240 |
| 15,000 | 22.5 | 40 | 1 | 30 | 2-1/2" | 1-1/4" | ECS15430-010X | ECD15430-010X | 199 | 245 |
| 15,000 | 22.5 | 50 | 1-1/2 | 30 | 2-1/2" | 1-1/4" | ECS15530-015X | ECD15530-015X | 202 | 249 |
| 15,000 | 22.5 | 60 | 2 | 30 | 2-1/2" | 1-1/4" | ECS15630-020X | ECD15630-020X | 207 | 254 |
| 15,000 | 22.5 | 70 | 3 | 30 | 2-1/2" | 1-1/4" | ECS15730-030X | ECD15730-030X | 215 | 263 |
| 20,000 | 30 | 20 | 1/2 | 30 | 2-1/2" | 1-1/4" | ECS20230-005X | ECD20230-005X | 190 | 236 |
| 20,000 | 30 | 30 | 3/4 | 30 | 2-1/2" | 1-1/4" | ECS20330-007X | ECD20330-007X | 194 | 240 |
| 20,000 | 30 | 40 | 1-1/2 | 30 | 2-1/2" | 1-1/4" | ECS20430-015X | ECD20430-015X | 202 | 249 |
| 20,000 | 30 | 50 | 2 | 30 | 2-1/2" | 1-1/4" | ECS20530-020X | ECD20530-020X | 207 | 254 |
| 20,000 | 30 | 60 | 3 | 30 | 2-1/2" | 1-1/4" | ECS20630-030X | ECD20630-030X | 215 | 263 |
| 20,000 | 30 | 70 | 3 | 30 | 2-1/2" | 1-1/4" | ECS20730-030X | ECD20730-030X | 215 | 263 |
| 25,000 | 37.5 | 20 | 1 | 30 | 2-1/2" | 1-1/4" | ECS25230-010X | ECD25230-010X | 194 | 240 |
| 25,000 | 37.5 | 30 | 1-1/2 | 30 | 2-1/2" | 1-1/4" | ECS25330-015X | ECD25330-015X | 199 | 245 |
| 25,000 | 37.5 | 40 | 1-1/2 | 30 | 2-1/2" | 1-1/4" | ECS25430-015X | ECD25430-015X | 202 | 249 |
| 25,000 | 37.5 | 50 | 2 | 30 | 2-1/2" | 1-1/4" | ECS25530-020X | ECD25530-020X | 207 | 254 |
| 25,000 | 37.5 | 60 | 2 | 30 | 2-1/2" | 1-1/4" | ECS25630-020X | ECD25630-020X | 207 | 254 |
| 30,000 | 45 | 20 | 1 | 45 | 3" | 1-1/4" | ECS30245-010X | ECD30245-010X | 239 | 291 |
| 30,000 | 45 | 30 | 1-1/2 | 45 | 3" | 1-1/4" | ECS30345-015X | ECD30345-015X | 245 | 297 |
| 30,000 | 45 | 40 | 2 | 45 | 3" | 1-1/4" | ECS30445-020X | ECD30445-020X | 251 | 307 |
| 30,000 | 45 | 50 | 3 | 45 | 3" | 1-1/4" | ECS30545-030X | ECD30545-030X | 260 | 318 |
| 30,000 | 45 | 60 | 3 | 45 | 3" | 1-1/4" | ECS30645-030X | ECD30645-030X | 260 | 318 |
| 40,000 | 60 | 20 | 1-1/2 | 75 | 4" | 1-1/4" | ECS40275-015X | ECD40275-015X | 285 | 341 |
| 40,000 | 60 | 30 | 1-1/2 | 75 | 4" | 1-1/4" | ECS40375-015X | ECD40375-015X | 285 | 341 |
| 40,000 | 60 | 40 | 2 | 75 | 4" | 1-1/4" | ECS40475-020X | ECD40475-020X | 293 | 349 |
| 40,000 | 60 | 50 | 3 | 75 | 4" | 1-1/4" | ECS40575-030X | ECD40575-030X | 301 | 356 |
| 50,000 | 75 | 20 | 1-1/2 | 75 | 4" | 1-1/4" | ECS50275-015X | ECD50275-015X | 285 | 341 |
| 50,000 | 75 | 30 | 3 | 75 | 4" | 1-1/4" | ECS50375-030X | ECD50375-030X | 301 | 356 |

NOTE: When ordering denote Single Phase or Three Phase by placing a 1 or 3 in place of the X in the model number .
Please refer to page 3 for available optional accessories.

EVERGREEN® Boiler Feed Systems

| Capacity Sq. Ft. EDR | Pump G.P.M. | Discharge PSI | Motor H.P. | Receiver Gallons | Inlet NPT | Model No. | | Shipping Weight Lbs. | |
|-------------------------|----------------|------------------|---------------|---------------------|--------------|------------------|------------------|----------------------|--------|
| | | | | | | Simplex | Duplex | Simplex | Duplex |
| 15 | 3 | 20 | 1/3 | 30 | 2 1/2" | EBFS15230-003X | EBFD15230-003X | 195 | 241 |
| 15 | 3 | 30 | 3/4 | 30 | 2 1/2" | EBFS15330-007X | EBFD15330-007X | 205 | 251 |
| 15 | 3 | 40 | 1 | 30 | 2 1/2" | EBFS15430-010X | EBFD15430-010X | 210 | 263 |
| 15 | 3 | 50 | 2 | 30 | 2 1/2" | EBFS15530-020X | EBFD15530-020X | 219 | 272 |
| 30 | 6 | 20 | 1/3 | 30 | 2 1/2" | EBFS30230-003X | EBFD30230-003X | 195 | 241 |
| 30 | 6 | 30 | 3/4 | 30 | 2 1/2" | EBFS30330-007X | EBFD30330-007X | 205 | 251 |
| 30 | 6 | 40 | 1 | 30 | 2 1/2" | EBFS30430-010X | EBFD30430-010X | 210 | 263 |
| 30 | 6 | 50 | 2 | 30 | 2 1/2" | EBFS30530-020X | EBFD30530-020X | 219 | 272 |
| 45 | 9 | 20 | 1/3 | 45 | 3" | EBFS45245-003X | EBFD45245-003X | 244 | 290 |
| 45 | 9 | 30 | 3/4 | 45 | 3" | EBFS45345-007X | EBFD45345-007X | 249 | 300 |
| 45 | 9 | 40 | 1 | 45 | 3" | EBFS45445-010X | EBFD45445-010X | 255 | 312 |
| 45 | 9 | 50 | 2 | 45 | 3" | EBFS45545-020X | EBFD45545-020X | 261 | 321 |
| 60 | 12 | 20 | 3/4 | 75 | 4" | EBFS60275-007X | EBFD60275-007X | 275 | 323 |
| 60 | 12 | 30 | 1 | 75 | 4" | EBFS60375-010X | EBFD60375-010X | 280 | 329 |
| 60 | 12 | 40 | 1 | 75 | 4" | EBFS60475-010X | EBFD60475-010X | 280 | 329 |
| 60 | 12 | 50 | 2 | 75 | 4" | EBFS60575-020X | EBFD60575-020X | 300 | 350 |
| 75 | 15 | 20 | 3/4 | 95 | 4" | EBFS75295-007X | EBFD75295-007X | 360 | 420 |
| 75 | 15 | 30 | 1 | 95 | 4" | EBFS75395-010X | EBFD75395-010X | 420 | 480 |
| 75 | 15 | 40 | 1 | 95 | 4" | EBFS75495-010X | EBFD75495-010X | 420 | 480 |
| 75 | 15 | 50 | 2 | 95 | 4" | EBFS75595-020X | EBFD75595-020X | 435 | 510 |
| 100 | 20 | 20 | 3/4 | 95 | 4" | EBFS100295-007X | EBFD100295-007X | 360 | 420 |
| 100 | 20 | 30 | 1 | 95 | 4" | EBFS100395-010X | EBFD100395-010X | 420 | 480 |
| 100 | 20 | 40 | 1-1/2 | 95 | 4" | EBFS100495-015X | EBFD100495-015X | 428 | 495 |
| 100 | 20 | 50 | 2 | 95 | 4" | EBFS100595-020X | EBFD100595-020X | 435 | 510 |
| 150 | 30 | 20 | 3/4 | 120 | 4" | EBFS1502120-007X | EBFD1502120-007X | 415 | 475 |
| 150 | 30 | 30 | 1 | 120 | 4" | EBFS1503120-010X | EBFD1503120-010X | 475 | 535 |
| 150 | 30 | 40 | 2 | 120 | 4" | EBFS1504120-020X | EBFD1504120-020X | 483 | 550 |
| 150 | 30 | 50 | 3 | 120 | 4" | EBFS1505120-030X | EBFD1505120-030X | 490 | 565 |

Note: Discharge Connection 1-1/4" NPT on all Pumps. When ordering denote single phase or three phase by placing a 1 or 3 in place of the X

Options: Condensate Receivers & Boiler Feed Units

- Gauge Glass
- Isolation Valve
- Dial Thermometer
- Pressure Gauge
- Pressure Gauge
- Check Valves
- Lifting Eye Bolts
- Float Switch (NEMA 4)

NEMA 4 Mechanical Alternator for Duplex Units

- Complete NEMA 4 Control Panel
- UI Label (Standard)
- Pilot Light (Standard)
- Test Push Button (Standard)
- Low Water Cutoff (Boiler Feed units)
- High Level Alarm Horn & Light w/ Silencing Switch (CP)
- Low Level Alarm Horn & Light w/ Silencing Switch (BF)
- TEFC Motor

Product Nomenclature Example: **Evergreen®** M/N ECD15730-0302 x 3.25

| ECD | 15 | 7 | 30 | 030 | 2 | 3.25 |
|---|---|------------------|------------------------|------------------------|-------------------------|----------------------|
| Model | EDR: Condensate H.P. Boiler Feed | Discharge PSI | Tank Size Gallons | Motor HP | Phase | Impeller Diameter |
| ECS = Evergreen Condensate Simplex | 2 = 2,000 EDR 4 = 4,000 EDR | 1 = 10 2 = 20 | 10 = 10 15 = 15 | 003 = 1/3 005 = 1/2 | 1 = Single 2 = Three | |
| ECD = Evergreen Condensate Duplex | 6 = 6,000 EDR 8 = 8,000 EDR | 3 = 30 4 = 40 | 30 = 30 45 = 45 | 007 = 3/4 010 = 1 | | |
| EBFS = Evergreen Boiler Feed Simplex | 10 = 10,000 EDR 15 = 15,000 EDR | 5 = 50 6 = 60 | 75 = 75 95 = 95 | 020 = 2 030 = 3 | | |
| EBFD = Evergreen Boiler Feed Duplex | 20 = 20,000 EDR 25 = 25,000 EDR 30 = 30,000 EDR 40 = 40,000 EDR 50 = 50,000 EDR | 7 = 70 8 = 80 | 120 = 120 150 = 150 | | | |

EVERGREEN® Pump and Motor Assemblies

| Pump & Motor Assemblies | Motor H.P. | Phase | RPM | Shipping Wt. Lbs. |
|-------------------------|------------|--------|-------|-------------------|
| EPM12-003-1 | 1/3 | Single | 3,450 | 40 |
| EPM12-005-1 | 1/2 | Single | 3,450 | 45 |
| EPM12-007-1 | 3/4 | Single | 3,450 | 48 |
| EPM12-010-1 | 1 | Single | 3,450 | 52 |
| EPM12015-1 | 1 1/2 | Single | 3,450 | 54 |
| EPM12-020-1 | 2 | Single | 3,450 | 58 |
| EPM12-030-1 | 3 | Single | 3,450 | 65 |
| EPM12-003-3 | 1/3 | Three | 3,450 | 40 |
| EPM12-005-3 | 1/2 | Three | 3,450 | 45 |
| EPM12-007-3 | 3/4 | Three | 3,450 | 48 |
| EPM12-010-3 | 1 | Three | 3,450 | 52 |
| EPM12015-3 | 1 1/2 | Three | 3,450 | 54 |
| EPM12-020-3 | 2 | Three | 3,450 | 58 |
| EPM12-030-3 | 3 | Three | 3,450 | 65 |

| Motor Model # | Motor H.P. | Phase | RPM | Shipping Wt. Lbs. |
|---------------|------------|--------|-------|-------------------|
| ES-402 | 1/3 | Single | 3,450 | 14 |
| ES-460 | 1/2 | Single | 3,450 | 18 |
| ES-461 | 3/4 | Single | 3,450 | 19 |
| ES-462 | 1 | Single | 3,450 | 22 |
| ES-463 | 1 1/2 | Single | 3,450 | 26 |
| ES-464 | 2 | Single | 3,450 | 36 |
| ES-4898 | 3 | Single | 3,450 | 38 |
| ES-2770 | 1/3 | Three | 3,450 | 14 |
| ES-2771 | 1/2 | Three | 3,450 | 16 |
| ES-2772 | 3/4 | Three | 3,450 | 17 |
| ES-2773 | 1 | Three | 3,450 | 19 |
| ES-2774 | 1 1/2 | Three | 3,450 | 23 |
| ES-2775 | 2 | Three | 3,450 | 27 |
| ES-4551 | 3 | Three | 3,450 | 38 |

EVERGREEN® Accessories and Repair Parts

| Base Tanks | |
|-------------------|--------------|
| Item/Model Number | Tank Gallons |
| ECP-0010 | 10 |
| ECP-0015 | 15 |
| ECP-0030 | 30 |
| ECP-0045 | 45 |
| ECP-0075 | 75 |
| ECP-0095 | 95 |
| ECP-0120 | 120 |
| ECP-0150 | 150 |

| Pump Adapter Kits | |
|-------------------|---------------------|
| Item/Model Number | OEM |
| ECP-0008-SH | Shipco |
| ECP-0008-AU | Aurora |
| ECP-0008-SK | Skidmore |
| ECP-0008-EC | Economy |
| ECP-0008-FD | Federal |
| ECP-0008-ST | Sterling |
| ECP-0008-NA | Nash |
| ECP-0008-HF | Hoffman/ITT/BG |
| ECP-0008-WE | Weinman |
| Not Needed | Dunham Bush |
| Not Needed | MEPCO Pump Packages |

| Receiver Tanks | | |
|-------------------|---------|-------------------|
| Item/Model Number | Gallons | Shipping Wt. Lbs. |
| ECP-0010 | 10 | 58 |
| ECP-0015 | 15 | 81 |
| ECP-0030 | 30 | 116 |
| ECP-0045 | 45 | 169 |
| ECP-0075 | 75 | 219 |
| ECP-0095 | 95 | 278 |
| ECP-0120 | 120 | 350 |
| ECP-0150 | 150 | 438 |

*Carbon Steel Tanks—Stainless Steel Optional

*Adapter Kits include gaskets

| Repair Parts | |
|-------------------|-----------------------------------|
| Item/Model Number | Description |
| ECP-0001 | Adapter Gasket |
| ECP-0002 | Tank Gasket |
| ECP-0003 | Adapter |
| ECP-0004 | Casing |
| ECP-0005 | Impeller |
| EML10235 | Isolation Valve |
| E129Q02A1 | Dial Thermometer |
| ES-2152 | Gauge Glass 10/15/30 Gallon Tanks |
| ES-2153 | Gauge Glass 45 Gallon Tanks |
| ES-2154 | Gauge Glass 75/95 Gallon Tanks |
| ES-2155 | Gauge Glass 100 + Gallon Tanks |
| ES-3654 | Float Switch - Simplex |
| ES-3655 | Mechanical Alternator - Duplex |
| E90021 | Bleeder Assembly |
| ESSK-0001 | Pump Seal Kit |



High Efficiency Pumps



Deluxe Dual Pump Control Panels

EVERGREEN® Condensate Pumps & Boiler Feed Systems

Construction

Evergreen Condensate Pumps and Boiler Feed systems have durable closed coupled centrifugal pumps with dynamically balanced impellers that are mounted directly to the shaft extension of efficient 3450 RPM motors. A volute designed pump case and attached motor adapter form the impeller enclosure. Pumps are furnished with high temperature carbon-ceramic mechanical seals rated @ 250° F for handling hot condensate and eliminating messy stuffing boxes. L50 (B50) rated motor bearings assure motor/pump assembly longevity. Units are available on 3Φ 50/60Hz 208v/230v-460v and 1Φ 50/60Hz 115v-230v AC.

Our carbon Steel receiver tanks have mounting feet so they can be easily secured to a house keeping foundation and a pair of vortex breakers to eliminate problems of loss in NPSHA (Net Positive Suction Head Available) and cavitation associated with the creation of vortices within pump suction. They also assist in the handling of hot condensate and prevent leakage by minimizing tank distortion by external plumbing forces through added rigidity at tank discharge.

Optional isolation valves prevent the loss of valuable condensate when pump/motor assemblies require removal for maintenance. A simplex unit may be converted to a duplex by removing the outlet cover plate, adding a second pump assembly (with isolation valve if added) and replacing the float switch with an alternator. (Note if your simplex unit came with a factory control panel it can easily be converted to a duplex by added the required components).

Duplex control panels include one NEMA 1 enclosure, main non-fused disconnect, two fuse blocks, two across the line magnetic starters with over load relays, two test-auto-off (T-O-A) selector switches. Switch handles are illuminated and double as pump running lights. There is one multi tap (460v-230v-208v-115v/115v) control circuit transformer with primary/secondary protection. Simplex control panels have a similar design with one of the above.

The duplex unit comes standard with a mechanical alternator that provides 100% automatic stand-by capabilities. With each rising and lowering condensate cycle in the receiver there is pump alternation. If the operating pump fails, the second pump will automatically start and carry the load. When condensate is returning to the receiver tank at a higher rate than one pump can handle the second pump will automatically assist the first pump.

Operation

Condensate formed in the heating terminal units and the steam distribution system flows by gravity to the handling unit's receiver. As the receiver tank fills the level is monitored by a float and it's connecting mechanism. At a pre-determined level the contacts of the float switch close, energizing the motor/pump assembly which discharges water (condensate) to a boiler or a boiler feed unit. Once the level in the receiver tank is lowered to a pre-set level the switch contacts open shutting off the pump action and it waits for another cycle to begin.

Selection

Evergreen® Series capacity is rated in EDR* X 1,000. Once you have determined your EDR requirements select the correct unit rated for the required load. The first column in the charts indicates units EDR capacity. Also in the charts is units discharge pressure rating. To determine discharge pressure rating add the boiler shut-off pressure to the elevation height difference of the boiler inlet connection and the pump discharge plus the calculated friction pressure drop in the connecting line from the pump discharge to the boiler inlet.** When discharge pressure requirements have been determined the forth column in the charts indicates the units discharge pressure rating. Finally using column five for simplex and column six for duplex select the model number of the unit that fits your requirements.

* 1,000 EDR = 1/2 GPM or 500 pounds per hour.

** To determine PSIG divide the difference of height in feet by 2.31.

Caution: Pump discharge should always be below boiler inlet.